



15255 S. 94<sup>th</sup> Avenue

Orland Park, IL 60462



# Property Features

- Orland Park's most prominent Class A building
- On-site property management
- High end amenities
- Immediate occupancy
- Space layout offered at no cost
- Across the street from Orland Square Mall
- Close to I-80/La Grange Road four way interchange



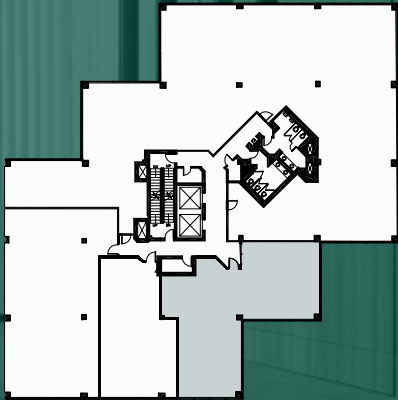
## Area Amenities





Floor Plans

Suite 400 1,966 SF





15255 S. 94<sup>th</sup> Avenue

Orland Park, IL 60462

## Contact:

### William Elwood

Executive Vice President

+1 630 573 7033

[william.elwood@cbre.com](mailto:william.elwood@cbre.com)

### Adam Lawler

Vice President

+1 630 368 2610

[adam.lawler@cbre.com](mailto:adam.lawler@cbre.com)

**CBRE**