

ORLAND
EXECUTIVE
POINTE 
WHERE SUCCESS WORKS IN ORLAND PARK

15303 S. 94th Ave

Orland Park, IL 60462

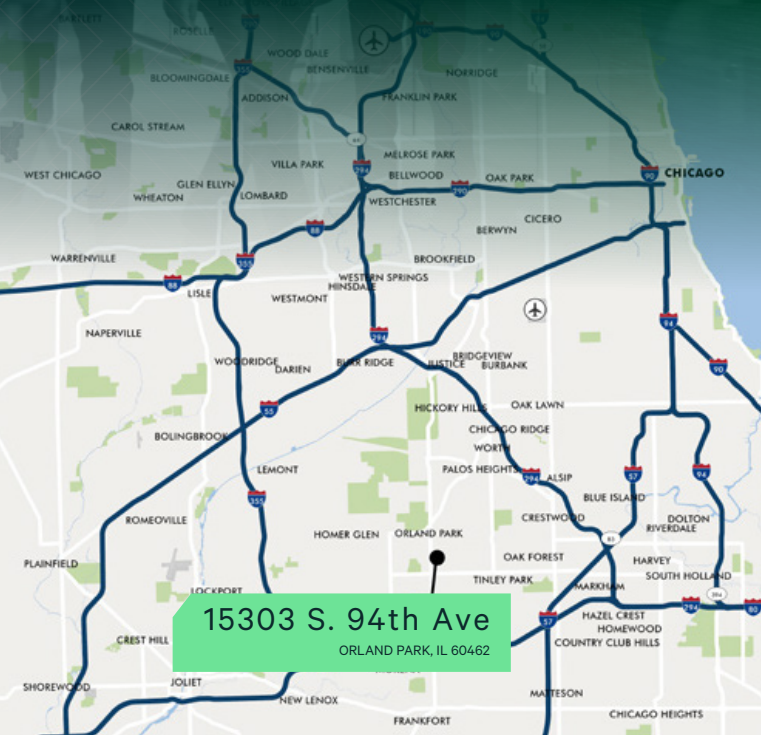


FOR LEASE

CBRE

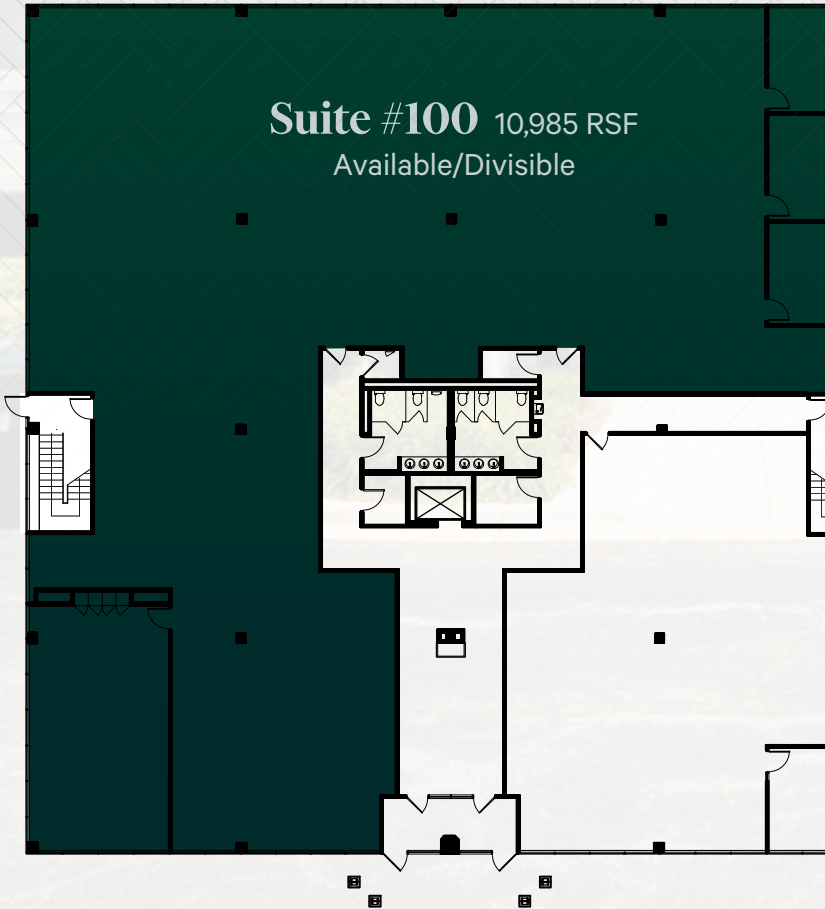
Location

- Prominent Building Signage
- 11,000 SF on 1st floor
- Divisible to 5,000 SF
- Abundant parking
- Continuous window line
- Across from abundant Orland Park shopping



< **NORTH**

Suite #100 10,985 RSF
Available/Divisible



ORLAND EXECUTIVE POINTE

WHERE SUCCESS WORKS IN ORLAND PARK



William Elwood

Executive Vice President

+1 630 573 7033

william.elwood@cbre.com

Adam Lawler

Vice President

+1 630 368 2610

adam.lawler@cbre.com

© 2021 CBRE, Inc. All rights reserved. This information has been obtained from sources believed reliable, but has not been verified for accuracy or completeness. You should conduct a careful, independent investigation of the property and verify all information. Any reliance on this information is solely at your own risk. CBRE and the CBRE logo are service marks of CBRE, Inc. and/or its affiliated or related companies in the United States and other countries. All other marks displayed on this document are the property of their respective owners. Photos herein are the property of their respective owners and use of these images without the express written consent of the owner is prohibited. PMStudio_October2021

CBRE